



*Alumni
Awards*

Friday, May 19, 2017

University Club, Ballroom B

PROGRAM

RECEPTION

WELCOME

Donald S. Burke, Dean

DINNER

PRESENTATION OF 2017 DELTA OMEGA INITIATES

Nancy Glynn, Faculty (EPI '94)

Leah M. Lamonte (IDM '06)

Natalie A. Solomon-Brimage (BCHS '06)

Christopher A. Taylor (EPI '10)

SPECIAL RECOGNITION OF SERVICE

Diane Howard (HPM '79)

PRESENTATION OF ALUMNI AWARDS

DISTINGUISHED ALUMNI AWARDS

For Practice: Eric Hulsey (BCHS '08)

and Michael Walsh Jr. (HPM '04)

For Research: Mary Ganguli (EPI '81)

For Teaching and Dissemination: Tammy Haley (MMPH '13)

THE MARGARET F. GLONINGER SERVICE AWARD

Annette Fetchko (HSA '84)

EARLY CAREER EXCELLENCE AWARD

Laura Gieraltowski (EPI '09)

ABOUT THE AWARDS

Recipients are alumni who have made a significant contribution to the field of public health, to the school, or to both. Each year, individual alumni are recognized with an award in one of the following categories:

THE DISTINGUISHED ALUMNI AWARD FOR...

PRACTICE is presented annually to an alumnus/na who has made a significant contribution to public health practice.

RESEARCH is presented annually to an alumnus/na who has made a significant contribution to research.

TEACHING AND DISSEMINATION is presented annually to an alumnus/na who has made a significant contribution to education and dissemination, either in the classroom or in the field.

THE MARGARET F. GLONINGER SERVICE AWARD is presented annually to an alumnus/na who has made a significant contribution to the school or community through volunteer service. This award was established in honor of the late Margaret Fitzgerald Gloninger, MSHyg '66, a Pitt Public Health graduate and former faculty member in maternal and child health.

THE EARLY CAREER EXCELLENCE AWARD is presented to an alumnus/na who has made significant achievements early in his or her career.

DELTA OMEGA

The Omicron chapter of the Delta Omega Honorary Society at the Graduate School of Public Health recognizes merit and encourages further excellence in, and devotion to, public health work. Delta Omega members are found in key leadership and essential fieldwork positions throughout the public health community and include current and past U.S. surgeon generals, a former president of the American Public Health Association, deans of the schools of public health, researchers, and policymakers. Our alumni inductees' work in the practice of public health serves as inspiration for future graduates of Pitt Public Health.

READ MORE

www.publichealth.pitt.edu/alumniawards

www.publichealth.pitt.edu/deltaomega

THE DISTINGUISHED ALUMNI AWARDS

FOR PRACTICE: ERIC HULSEY



Eric Hulsey is manager of behavioral health analytics in the Allegheny County Department of Human Services (DHS) Office of Data Analysis, Research and Evaluation. In this role, he is responsible for working with key partners to evaluate behavioral health services administered by DHS and find practical applications for research, as well as for managing all research activities, implementation, and reporting efforts; designing and developing quantitative and qualitative data analysis; and helping to determine the optimal data structure and system requirements to ensure that data stored and retrieved from the system meets the research and operational needs of DHS.

Hulsey is a key contact for Pitt Public Health researchers who are investigating mental and behavioral health using the DHS's extensive data system and the Allegheny County Data Warehouse. As a member of a workgroup on population mental health at Pitt Public Health, he facilitates key collaborations between the University and major health and community organizations. He also serves as an adjunct faculty member and gives guest lectures, mentors students, and arranges practicum experiences.

Previously, Hulsey was a services innovations specialist at Allegheny HealthChoices, Inc., where he assessed substance abuse disorder treatment and recovery within Allegheny County through the implementation of evidence-based treatment programs, the use of data to drive service innovations, and evaluation consultation. He also has held positions in health consulting firms, including the Institute for Research, Education and Training in Addictions, where he served as scientific director. Between 2004 and 2009, Hulsey served as an advisory board member and past president for Prevention Point Pittsburgh, a nonprofit that aims to promote and advocate for the reduction of harm associated with injection drug use, including overdose, and to reduce the risk of HIV/AIDS, Hepatitis C, and other blood-borne infections.

Hulsey earned his DrPH in behavioral and community health sciences from Pitt Public Health in 2008.

FOR PRACTICE: MICHAEL T. WALSH JR.



Michael T. Walsh Jr. is founder and principal of 25 Strategies, a consulting firm focused on creating and deploying impact strategy for foundations, health systems, nonprofit organizations, governmental agencies, and social impact ventures that address public health challenges, strengthen health systems, and build resilient communities.

Walsh is also interim chief of strategy and programs for the University of Texas MD Anderson Cancer Center's Cancer Prevention and Control Platform, which is focused on accelerating the development, dissemination, and amplification of evidence-based strategies, community services, policy

interventions, and knowledge targeting measurable reductions in cancer incidence and mortality at a population level. In addition, Walsh has worked closely with other nonprofit organizations focused on underserved communities and vulnerable populations.

Previously and for nearly a decade, Walsh led the design, development, strategy, and implementation of high-impact global health initiatives for one of the nation's leading pediatric and maternal health systems. In this capacity, he maintained strategic, financial, and operational leadership responsibility for a global health program portfolio spanning 10 clinical specialties, including public-private partnerships with 18 foreign governments, and supported by U.S. federal funding streams, United Nations agencies, and philanthropic investments.

Throughout his career, Walsh has worked in more than 20 countries building sustainable public-private partnerships that address the needs of children, women, and underserved populations in resource-limited settings. He has served as a board officer for nongovernmental organizations in Uganda and Malawi. As an instructor for numerous graduate and undergraduate programs, he has developed curricula for courses spanning governance, public health, global health, and health policy. He is a 2002 graduate of the University of Notre Dame. In 2013, he was named one of Houston's 40 Under 40 by the *Houston Business Journal*.

Walsh earned his MHA in health policy and management in 2004 from Pitt Public Health.

FOR RESEARCH: MARY GANGULI



Mary Ganguli is professor of psychiatry and neurology at the University of Pittsburgh School of Medicine and professor of epidemiology at Pitt Public Health. Her research focuses on the epidemiology of late-life mental disorders, particularly neurocognitive disorders, including Alzheimer's disease. She is the principal investigator of several National Institute on Aging (NIA)-funded, population-based investigations in the area of dementia and Alzheimer's disease, in both Western Pennsylvania and India that form the Dementia Epidemiology Program, which studies the distribution, determinants, and outcomes of cognitive decline and

dementia in late life. NIA has supported her research on the epidemiology of cognitive impairment and dementia continuously since 1986.

Ganguli has served as a member of the National Advisory Council on Aging (2006–09), on work groups of the American Psychiatric Association and American Academy of Neurology, and on multiple editorial boards and National Institutes of Health study sections. She has received many honors for her work, including the Outstanding Academician Award from the Indo-American Psychiatric Association in 2009. Her research has resulted in more than 135 published manuscripts and countless reviews, invited papers, editorials, monographs, and book chapters on this topic.

She earned her medical degree at Christian Medical College, Vellore, Madras, India, and undertook residency training in general psychiatry at Memorial University (Canada) and the University of Pittsburgh. She holds specialist certification in psychiatry from the Royal College of Physicians and Surgeons (Canada) and in both general and geriatric psychiatry from the American Board of

Psychiatry and Neurology.

Ganguli earned her MPH in epidemiology in 1981 at Pitt Public Health.

FOR TEACHING AND DISSEMINATION: TAMMY HALEY



Tammy Haley is director of nursing and radiological sciences, associate professor of nursing, and coordinator of the RN-BSN program in the Division of Biological and Health Sciences at the University of Pittsburgh at Bradford, where she has been a member of the nursing faculty since 2003. She teaches Physical Examination and Health Promotion and Community Health Nursing at the BSN level and teaches at all levels of the ASN program, in both the classroom and clinic.

Haley's use of research as a means to engage students, enhance her teaching, add to the body of knowledge in the field, and provide service to the global community has taken her around the corner and the world—most recently, she accompanied Pitt-Bradford nursing students to Washington, D.C., to present public and community-based health research that shed light on disparities within many rural Appalachian communities, earning her recognition as an Appalachian Teaching Fellow through the Appalachian Teaching Project (ATP). In 2011, she involved her students in work in Ekona, Cameroon, West Africa, that helped to establish the Good Samaritan Health Center, and in her own community, she continues to serve with organizations such as Empty Bowls and Zonta International.

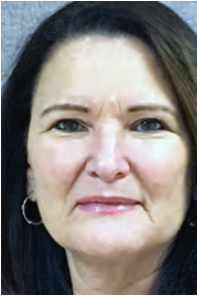
Her current research focuses on the personal, environmental, and behavioral factors that influence protective sexual behavior among rural, high-school aged youth. In addition to her faculty responsibilities, Haley continues to serve as a family nurse practitioner in the Bradford area, and prior to her faculty appointment, she was a nationally certified family nurse practitioner specializing in family practice and women's health. Haley also has many years of clinical experience as a registered nurse in the pediatric and medical-surgical areas.

Haley received Pitt-Bradford's Chair's Faculty Teaching Award in 2012 and President's Award for Excellence in Teaching, Scholarship, and Service in 2016.

Haley earned an MMPH from Pitt Public Health in 2013.

THE MARGARET F. GLONINGER SERVICE AWARD

ANNETTE FETCHKO



Annette Fetchko currently serves as the regional manager for the Center for Inclusion Health (CIH), a division of the Department of Medicine at Allegheny Health Network (AHN), with a mission to provide outstanding health care to all people in the region served by AHN, especially socially marginalized and vulnerable populations. Fetchko oversees the operational and strategic development of the programs within CIH.

Prior to her role at CIH, Fetchko served from 2010 to 2017 as administrator of the Catholic Charities Free Health Care Center (CCFHCC) in downtown Pittsburgh. The CCFHCC provides free medical and dental care to

uninsured and underinsured individuals. During her tenure, Fetchko expanded care and raised more than \$6 million in new funding, resulting in a substantial increase in the CCFHCC operating budget, which is funded solely thru foundations, corporations, individual donors, and an annual special event. The CCFHCC does not receive any federal or state funding; does not bill third-party payers, and does not charge patients a sliding fee scale. During her service, has participated in numerous fundraising events in her personal time. She has testified at the auditor general's hearings on Pennsylvania's use of Tobacco Master Settlement Agreement funds and advocated for more funding for the uninsured and underinsured. She had secured more than \$700,000 to expand patient care space and increase the number of volunteer health professionals. As a result, CCFHCC has been able to increase the number of patients it serves and reduce waiting time for prospective patients. Fetchko also served on the CCFHCC Board of Directors. She continues to volunteer as a nurse at the CCFHCC, having earned an RN degree in 2003 to enable her to better understand health needs and become more involved in health care.

Throughout her 30-year career, Fetchko has held senior management positions in various health care organizations, including as manager of organizational effectiveness for what was previously the West Penn Allegheny Health System Alle-Kiski Medical Center. She also worked as a staff nurse in the medical-surgical unit at UPMC St. Margaret hospital, and continues to support the nursing profession through her volunteer tutoring of nursing students.

Fetchko earned an MHA in 1984 at Pitt Public Health.

THE EARLY CAREER EXCELLENCE AWARD

LAURA B. GIERALTOWSKI



Laura B. Gieraltowski is serving as a lieutenant commander with the Commissioned Corps of the U.S. Public Health Service (PHS) for which she is an epidemiologist at the Centers for Disease Control and Prevention (CDC) National Center for Emerging and Infectious Zoonotic Diseases, Division of the Foodborne, Waterborne, and Environmental Diseases' Outbreak Response and Prevention Branch (ORPB). She regularly leads teams of public health professionals in large, complex outbreak investigations of foodborne disease that often extend through multiple states and involve enteric pathogens that are responsible for 48 million U.S. cases each year.

During these investigations, she serves as one of the primary CDC liaisons to the U.S. Food and Drug Administration and the Department of Agriculture in order to facilitate actions to protect public health, such as product recalls and consumer warnings. Over the past five years, she has led more than 80 major outbreak investigations, leading to 15 recalls of nationally distributed food products, including sprouts, chicken products, cucumbers, cantaloupes, peanut butter, spinach, beef, and the largest meat recall in U.S. history (approximately 36 million pounds of ground turkey). She serves as a nationally recognized expert on outbreaks of Salmonella illnesses related to poultry products and has been interviewed by major television and radio news outlets.

Gieraltowski joined the CDC's Epidemic Intelligence Service (EIS) in 2009. She was assigned to the Enteric Diseases Epidemiology Branch, where she worked on a number of foodborne disease outbreak investigations both in the field and from CDC headquarters. She also worked on a safe water project in Kenya and consulted with the Thai government to evaluate and improve the country's foodborne disease surveillance system. After completing her EIS training in 2011, she was hired as a staff doctoral epidemiologist with ORPB.

Gieraltowski earned her PhD in epidemiology in 2009 from Pitt Public Health.

SPECIAL RECOGNITION OF SERVICE

DIANE HOWARD



Diane Howard is associate professor and director of student development in the Department of Health Systems Management (HSM) at Rush University Medical Center, where she teaches courses in managed care, health care in America, and professionalism. She serves on the HSM career services, chairman's council, curriculum, faculty appointments and promotions, recruiting and marketing, and research committees and is a member of the Rush University Medical Center Diversity Leadership Group. Prior to her appointment at Rush, she was vice president of medical delivery at Aetna; vice president of Medicare, Medicaid, and Individual

Products at U.S. Healthcare; director of the American Hospital Association (AHA)'s Division of Ambulatory Care; and assistant vice president at Rush University Medical Center.

Howard is chair of the board of directors of the Association of University Programs in Health Administration and a board member-at-large of the National Association of Health Services Executives (NAHSE) Chicago Midwest chapter. She also is a fellow of the American College of Healthcare Executives (ACHE), NAHSE Research committee chair, member of the ACHE Northern Illinois Regional Advisory Committee, board member and finance committee chair at Holy Cross Hospital in Chicago, and member of the University of Pittsburgh and University of Illinois alumni advisory boards. She received the Leader-to-Leader Award from ACHE in 2016, and her publications have appeared in *Frontiers of Healthcare Management*, *Journal of Health Administration Education*, *Healthcare Executive*, *Journal of Hospital Administration*, *Journal of Public Health*, and *Journal of Healthcare Management*.

Howard received her MPH in health policy and administration from Pitt Public Health in 1979.

ALUMNI AWARDS COMMITTEE

Special thanks to the Alumni Awards Committee for their service in selecting this year's honorees.

Eleanor Feingold, PhD, chair, faculty
Robin Grubs, PhD, MS (HUGEN '91, '02), faculty
Tom Songer, PhD, MPH (EPI '86, '90), faculty
Martha Terry, PhD, faculty
Mehran S. Massoudi, PhD, MPH (EPI '92, '93)
Janice Scully Dorman, PhD, MSHyg (HUGEN '81, EPI '83)
Michael Blackwood, MPH (HADM '80)
Rashida R. Dorsey, PhD (EPI '06)
Diane Howard, MPH (HADM '79)
Abigail Tan (MHA candidate '18)

The Alumni Awards Committee, including faculty, former alumni award honorees, and student leaders, selects annual honorees via a competitive nomination and review process.

THE DELTA OMEGA INITIATES

NANCY W. GLYNN



Nancy W. Glynn is assistant professor in the Department of Epidemiology at Pitt Public Health. An exercise epidemiologist with a strong interest in the measurement of fatigability, physical activity, fitness, and physical function in older adult populations, she has completed pioneering work to develop innovative approaches for measuring performance and perceived fatigability in older adults; specifically, she designed and validated the Pittsburgh Fatigability Scale (PFS), the first self-administered tool that combines a measure of fatigue and demand. Since 2013 she has been a director of the doctoral level course, Reading and Analyzing the Public

Health Literature.

Glynn has served as director of the master's degree programs in epidemiology since 2012. In this capacity she has recruited and mentored more than 100 students, including identifying internship placements. She represents the Department of Epidemiology as a member of the school-wide Education Policy and Procedures Committee, and also serves on the Department of Epidemiology's admissions, curriculum, and scholarship committees. Glynn was recognized in May 2017 as a fellow of the Gerontological Society of America, Health Sciences Section. In April 2014, Glynn founded the community service group Epi Gives Back, offering opportunities for students and faculty to engage in volunteer activities throughout the community. Outside of the University, Glynn has served on the boards of directors for JDRF, Temple Sinai, and the Israel Heritage Classroom in the Cathedral of Learning. In 2015, Glynn received the Margaret F. Gloninger Service Alumni Award for her significant contributions to the school and greater community through volunteer service.

Glynn received her PhD in epidemiology in 1994 from Pitt Public Health.

LEAH M. LAMONTE



Leah M. Lamonte has served since 2006 as a vector control specialist with the Allegheny County Health Department, one of only two employees in the Vector Control Program and responsible for all surveillance, control, education, and prevention of vector-borne disease in the county. Her primary work involves conducting mosquito-borne disease surveillance to determine the activity of arboviruses like West Nile Virus as well as tracking the spread of invasive mosquito species (e.g., Asian Tiger mosquito) that have the potential to introduce new viruses like Zika. She engages with the public through educational efforts such as community

and academic presentations, science and health fairs, and interviews with local media outlets. She also helps to train county municipal workers seeking a pesticide applicator's license and enforces public health laws relative to preventing mosquito-breeding habitats.

Lamonte mentors and trains future public health graduates through her participation in the Pitt

Public Health Alumni Mentor Program and Pittsburgh Summer Institute, which the school facilitates. She actively participates on the board and currently serves as president of the Pennsylvania Vector Control Association, an organization providing educational enrichment and professional networking to all Commonwealth health personnel engaged in vector control activities.

Lamonte received her MS in infectious diseases and microbiology from Pitt Public Health in 2006.

NATALIE A. SOLOMON-BRIMAGE



Natalie A. Solomon-Brimage is a public health analyst serving as a project officer and contract officer representative (COR) for the Special Projects of National Significance (SPNS) Office of Training and Capacity Development within the Health Resources and Services Administration (HRSA) HIV/AIDS Bureau. She oversees the monitoring, assessment, and reporting for selected demonstration sites in the following SPNS initiatives: Dissemination of Evidence Informed Interventions to Improve Health Outcomes along the HIV Care Continuum Initiative; Use of Social Media to Improve Engagement, Retention, and Health Outcomes along the HIV Care

Continuum; Enhancing Access to and Retention in Quality HIV/AIDS Care for Transgender Women of Color Initiative; System-Level Workforce Capacity Building for Integrating HIV Primary Care in Community Health Care Settings; and Culturally Appropriate Interventions of Outreach, Access, and Retention among Latino(a) Populations. Her research interests include cultural humility, health equity, and women's health in communities of color. In her spare time she volunteers with Alpha Kappa Alpha Sorority, Inc., mentoring young women on their career paths.

Solomon-Brimage joined HRSA eight years ago as an HRSA Scholar in what was then the Bureau of Clinician Recruitment and Services. She managed the bureau's \$50 million state loan repayment program and was a COR for the credit-vetting process of clinicians participating in the National Health Service Corps.

Solomon-Brimage earned her MPH in behavioral and community health sciences from Pitt Public Health in 2006.

CHRISTOPHER A. TAYLOR



Christopher A. Taylor serves as an epidemiologist in the Alzheimer's Disease and Healthy Aging Program at the Centers for Disease Control and Prevention (CDC), where he focuses on public health issues that affect older Americans, including infectious diseases such as influenza; injuries, including falls; and dementias, including Alzheimer's disease. His responsibilities include promoting the health and wellbeing of persons with dementia as well as the need to identify caregiving as a public health issue. He also has completed work on re-examining the surveillance definition for dementia-related mortality.

Taylor joined the CDC as a postdoctoral fellow in the Epidemic Intelligence Service in 2010. In

this position, he broadened his public health focus to include the study of infectious diseases and applied epidemiology and assisted with outbreaks in the field, including yellow fever in Uganda and anthrax among injection heroin users in Scotland. He then transitioned to the CDC Traumatic Brain Injury (TBI) Team, where he functioned as the lead epidemiologist for national surveillance efforts of persons with TBI. He published several manuscripts on the subject and led the development of the plan to expand public health surveillance of brain injury through a national telephone survey. In October 2014, Taylor was detailed to the CDC Emergency Operations Center to assist with what was then considered to be one of the greatest threats to public health in the past decade—the spreading pandemic of Ebola in West Africa. Along with his team, he served as a direct line for health departments and clinicians across the United States, providing guidance for those working to prevent cases of Ebola from going undetected on American soil.

Taylor earned his PhD in epidemiology at Pitt Public Health in 2010.

2017 STUDENT DELTA OMEGA INDUCTEES

In addition to these four Delta Omega inductees, 14 Pitt Public Health students were inducted into Delta Omega at the April 30 Celebration of Students Awards.

PREVIOUS ALUMNI AWARDEES

2016

Mehran Massoudi, MPH '92, PhD '93
Susan Slaugenhaupt, MS '88, PhD '91
Janice Scully Dorman, MSHyg '81, PhD '83
Michael Blackwood, MPH '80
Rashida R. Dorsey, PhD '06

2015

Yvette Conley, PhD '99
Megan Kavanaugh, DrPH '08
Patricia Maryland, DrPH '82
Nancy Obuchowski, PhD '91
Nancy W. Glynn, PhD '94

2014

Chung-Chou "Joyce" H. Chang, PhD '98
James Clise, MPH '63
Karen Cruickshanks, PhD '87
Susan Ott, MPH '76
Mary Herbert, MPH '05

2013

Coleen Boyle, PhD '81
Anita Caufield, MHA '84
William Holman, MHA '79
Mary Patricia Nowalk, PhD '93

2012

Edward W. Gregg, PhD '96
James B. Pieffer, MHA '86
Joel Weissfeld, MPH '82
John J. Zanardelli, MPH '79

2010

Madalon O'Rawe Amenta, MPH '68,
DrPH '78
Clareann Bunker, PhD '84
Richard Lugg, MPH '66
Patsy Hesen Haslam, MPH '69

2009

Kenneth Miller, MS '70
David Reed, MS '61
Jeanne Zborowsk, PhD '00

2008

Gerald M. Barron, MPH '71
James C. Helmkamp, PhD '83
Paul M. Winkler, MPH '81
Constance S. McCormick, MPH '85
Shirley McIvried, MPH '83

2007

Agnes Bouldin, DrPH '88
Anthony Lubiniecki, ScD '72
Dietrich Stephan, PhD '96
Laura Rosato, PhD '90
Charles Vargo, MHA '84

2006

Robert Geddis, MSHyg '73
Marlene Lugg, MPH '66, DrPH '81
Thomas White, MSHyg '72
Diego Chaves-Gnecco, MMPH '00

2005

Joseph Costantino, MPH '74, DrPH '76
Constance Husman, MSHyg '74
Gerald Katz, MSHyg '63
Marc Hiller, MPH '74, DrPH '78
Samuel Koilpillai, MSHyg '76

2004

Allen Brodsky, ScD '66
Jane Cauley, MPH '80, DrPH '83
David Savitz, PhD '82
Marlene Lugg, MPH '66, DrPH '81

2003

Galen E. Cole, MPH '87
James M. Klingensmith, MPH '77, ScD '87
Patricia W. Potrzebowski, PhD '74
Kimberlee Evert, MPH '88

2002

Judith Badner, MSHyg '85, PhD '88
Glenn Schneider, MPH '91
Gerald C. Colvin, MA '86, DrPH '93
Joan M. Mavrinac, MPH '88

2001

Brian Jacob, MHA '86
Diane Peterson, MPH '74
Beth Elaine Quill, MPH '82

2000

Victor J. Catullo, MPH '98
William T. Godshall, MPH '85
Michael C. Waters, MS '67
Lynn Marie Weber, MPH '97

1999

GSPH 50th Anniversary
50 at 50 Awards given

(continued)

1998

Marie C. Baker, MSHyg '84
Todd Schryer, MHA '92
Carol Synkewecz, MPH '75
Scott Becker, MPH '80
James Collins, MHA '87
Anne R. Medsger, MSHyg '81
Russell Rycheck, MPH '59, DrPH '65

1997

Mark A. Vojtecky, MPH '86
John A. Armstrong, ScDHyg '67
Maurice A. Shapiro
Robert B. Yee, MS '52 [FAS], PhD '57 [FAS]

1996

George Board, DrPH '83
Harold E. Kennah, MS '85
Daniel J. Schaid, MS '81, PhD '86
Joyce E. White, DrPH '93
William F. Gauss, MPH '83

1995

Lucile L. Adams-Campbell, PhD '83
Ronette R. Briefel, MPH '76, DrPH '82
Lawrence W. Keller, MSHyg '71
Michael R. Peterson, DrPH '85
Mary K. Conner, PhD '78
Joanne F. McVay, MPH '75, DrPH '84

1994

Jan R. Jennings, MPH '76
Mohamed Sabet Mahdy, MPH '60,
ScDHyg '63
Grace E. Ware, MPH '73
Kenneth L. Garver, PhD '75

1993

Janine Jagger, MPH '74
Akira Koizumi, MS '66
L. Jon Schurmeier, MSHyg '70
Theresa A. Chalich, MPH '89
Karen S. Peterson, MPH '70

1992

Michael Blackwood, MPH '80
John M. Lachin III, ScDHyg '72
Carol K. Redmond, ScDHyg '66

1991

Joanne Marie Andiorio, DrPH '84
David Gur, ScDHyg '77

1989

Mark H. Barnett, MPH '61
Mary Ann Scialabba, MSHyg '63

1986

Sydney J. Cutler, ScDHyg '61
Mostafa A. El Batawi, MPH '57,
ScDHyg '59

1983

Lois G. Michaels, MSHyg '63

STAY INVOLVED WITH PITT PUBLIC HEALTH

Pitt Public Health offers a variety of ways to stay current, be connected, and share your knowledge.

PITT PUBLIC HEALTH IN THE WORLD

Help show all the great things Pitt Public Health alumni are doing! Share your professional news, awards, accomplishments, and photos from around the world in the Pitt Public Health alumni magazine and/or on the school and departmental Web sites. Pictures of alumni are especially welcome, whether teaching, conducting service work or research, on the job, speaking at a conference, or attending a public health event anywhere in the world. Submit your news and photo for consideration at www.publichealth.pitt.edu/share-news or send a hi-resolution (300 dpi) file to phalum@pitt.edu. Include your name, affiliation to the school, and a few sentences about the scene.

GET SOCIAL!

Connect with Pitt Public Health on Facebook, Twitter, LinkedIn, and Flickr.

Visit www.publichealth.pitt.edu/socialmedia for links.

VOLUNTEER OPPORTUNITIES

Serve as a lecturer, mentor current students, help at a recruiting event, or find a unique opportunity suited to your skills and experiences. Take a look at www.publichealth.pitt.edu/alumni and contact Sarah McMullen at 412-647-5307 or phalum@pitt.edu for more information.

ONE BOOK, ONE COMMUNITY READ-ALONG

Join Pitt Public Health students, faculty, and staff in this new tradition. Read the annual selection and participate in year-long programming, including live and virtual events and discussions.

Visit www.publichealth.pitt.edu/oboc-alumni for more information.

CONTINUING EDUCATION

Pitt Public Health offers lectures, courses, and other continuing education programs eligible for Certified in Public Health (CPH) recertification credit. Visit www.publichealth.pitt.edu/cphce for upcoming programs.

UPDATE YOUR INFORMATION

Pitt Public Health communicates with its alumni in a variety of ways: postal mail, e-mail, and phone. It is important that you update your contact information to receive invitations to events as well as the latest Pitt Public Health news. Contact Sarah McMullen at 412-647-5307 or phalum@pitt.edu with your update.

UPCOMING EVENTS

Join us for an event in your home area or on the Pittsburgh campus.

Visit www.publichealth.pitt.edu/calendar for a list of upcoming live and virtual events across the school, or www.publichealth.pitt.edu/alumni for featured events for alumni.

ABOUT PITT PUBLIC HEALTH

Since our founding in 1948, the University of Pittsburgh Graduate School of Public Health has successfully implemented a three-component mission of research, education, and service. We create, transmit, and apply new knowledge—all for the benefit of human health. As we see it, the most important driver for the entire school is to ensure that our work—and the work of our graduates—is used to develop products, provide services, and enact policies that make a difference in people's lives. And the fruits of our labors are all around us, every day, in longer, happier, and healthier lives.

At Pitt Public Health, we are first and foremost problem-solvers. Our faculty members are thought-leaders who embrace problem-solving in every aspect of their work, whether in their research or classroom instruction, and who cultivate those skills in students through their mentorship. Through rigorous programs in theoretical and applied learning, Pitt Public Health students acquire the knowledge and skills needed to assume leadership roles in public health. They are prepared to apply what they have learned to real-world situations. And, through our research centers and programs, students don't have to wait until they get out into the field to make a difference—they can begin to contribute immediately.

New public health challenges face us every day. From the innovative vaccine work done here by Jonas Salk, to research on Zika transmission, to modeling the opioid epidemic, Pitt Public Health responds to today's health threats by preparing the next generation of public health leaders, using innovation as the catalyst for problem-solving.



University of Pittsburgh

Graduate School of Public Health

A600 Crabtree Hall, 130 DeSoto Street, Pittsburgh, PA 15261

www.publichealth.pitt.edu