

DEPARTMENT OF EPIDEMIOLOGY FALL 2018 SEMINAR

Topics in Epidemiology: Research and Career Pathways

**M. Kaye Kramer, DrPH,
MPH, RN, CCRC**



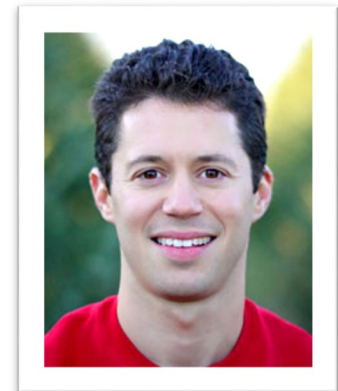
**Chief Scientific Officer, Innovative Wellness Solutions;
Adjunct Associate Professor of Epidemiology,
Dept. of Epidemiology, GSPH, University of Pittsburgh**

Dr. Kaye Kramer is the Chief Science Officer for Innovative Wellness Solutions, LLC, a Pittsburgh-based population health management firm. She is also an Adjunct Associate Professor of Epidemiology in the University of Pittsburgh Graduate School of Public Health. Previously, as the Director of the Diabetes Prevention Support Center at the University of Pittsburgh, Dr. Kramer's work focused on translational research in the community; specifically, implementing and evaluating an adaptation of the lifestyle intervention shown to be effective in the Diabetes Prevention Program clinical research trial. In her current role with Innovative Wellness Solutions, Dr. Kramer is responsible for ensuring a sound evidence base for corporate wellness strategies and leads training efforts for health providers in delivery of the adapted DPP lifestyle curriculum for providers across the US.

**President,
Innovative Wellness Solutions**

Jordan Taradash is the President of Innovative Wellness Solutions. He holds a BS in finance from The Pennsylvania State University, and a Master of Public Health in Epidemiology from the University of Pittsburgh. Jordan's primary role is to craft a coherent vision that meets the needs and goals of all of IWS' stakeholders. "Our customers are people; groups of people that make up organizations, individuals trying to live a balanced and healthy life, and our Wellness Engineers strive to fulfill their life's mission to enable all of those people to succeed."

Jordan Taradash, MPH



The Diabetes Prevention Program: From Research to Real World Practice

November 29th

G23 Public Health Auditorium 12:00 - 1:00 pm