

Resource Map to Enhance Faculty Diversity at Pitt Public Health

Table of Contents

Recruiting URM Faculty
Page 2

Funding & Mentoring
Page 3

**Scholarly Activities in
Research Targeting URM**
Page 4

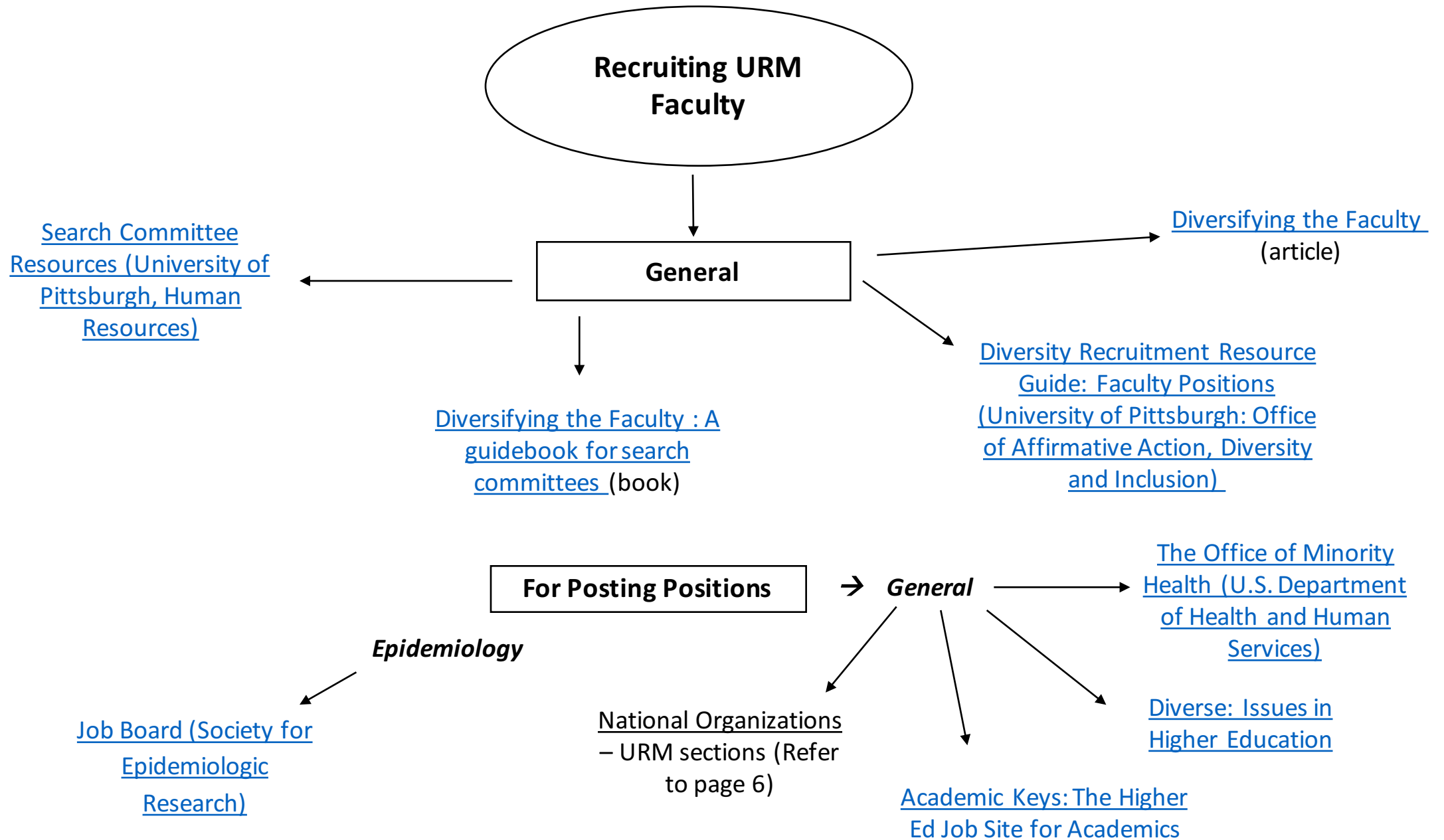
University Wide Resources
Page 5

Organizations/Resources
Page 6

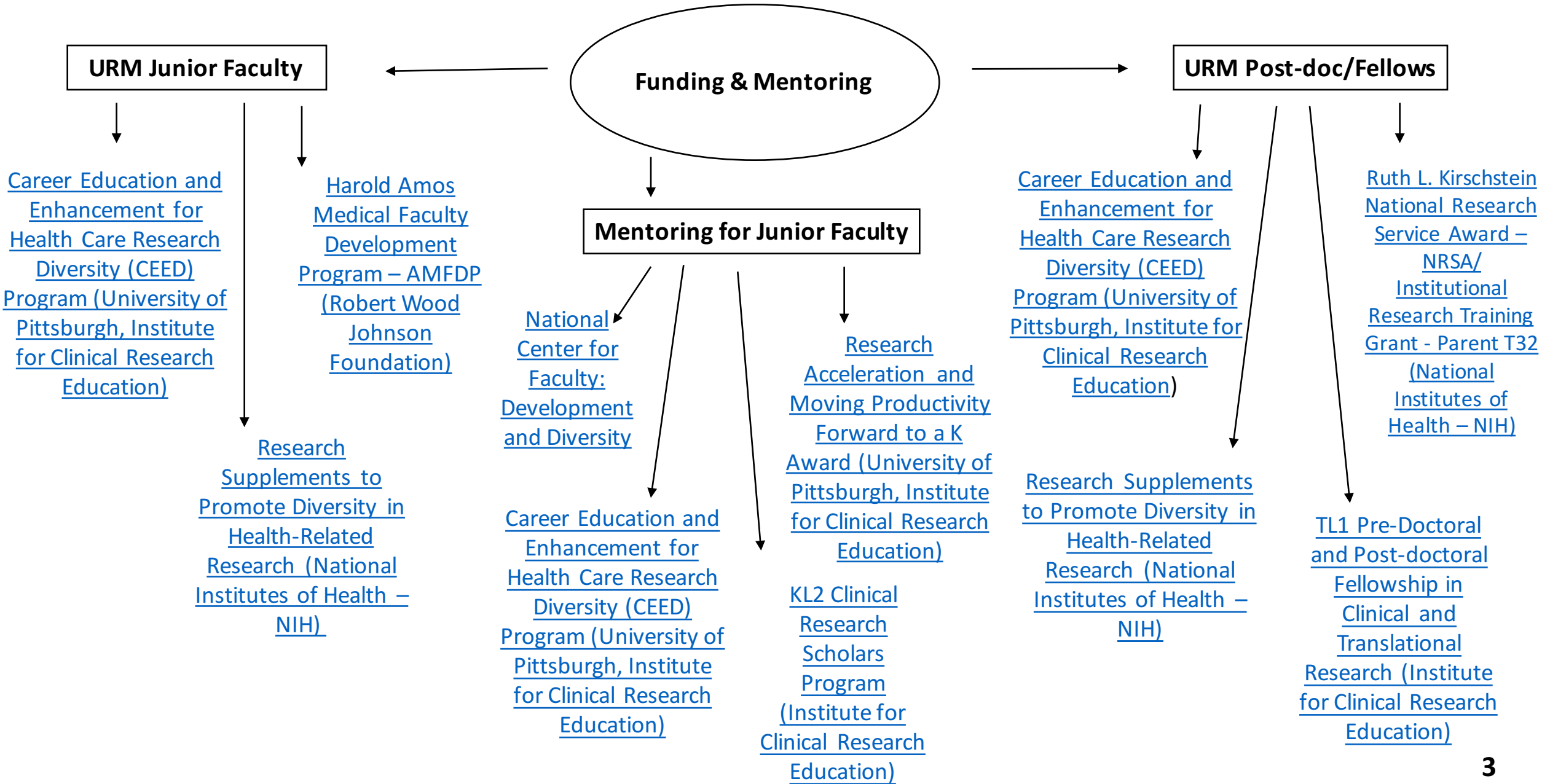
Diversity Education
Page 7

Limited/No Resources
Page 8

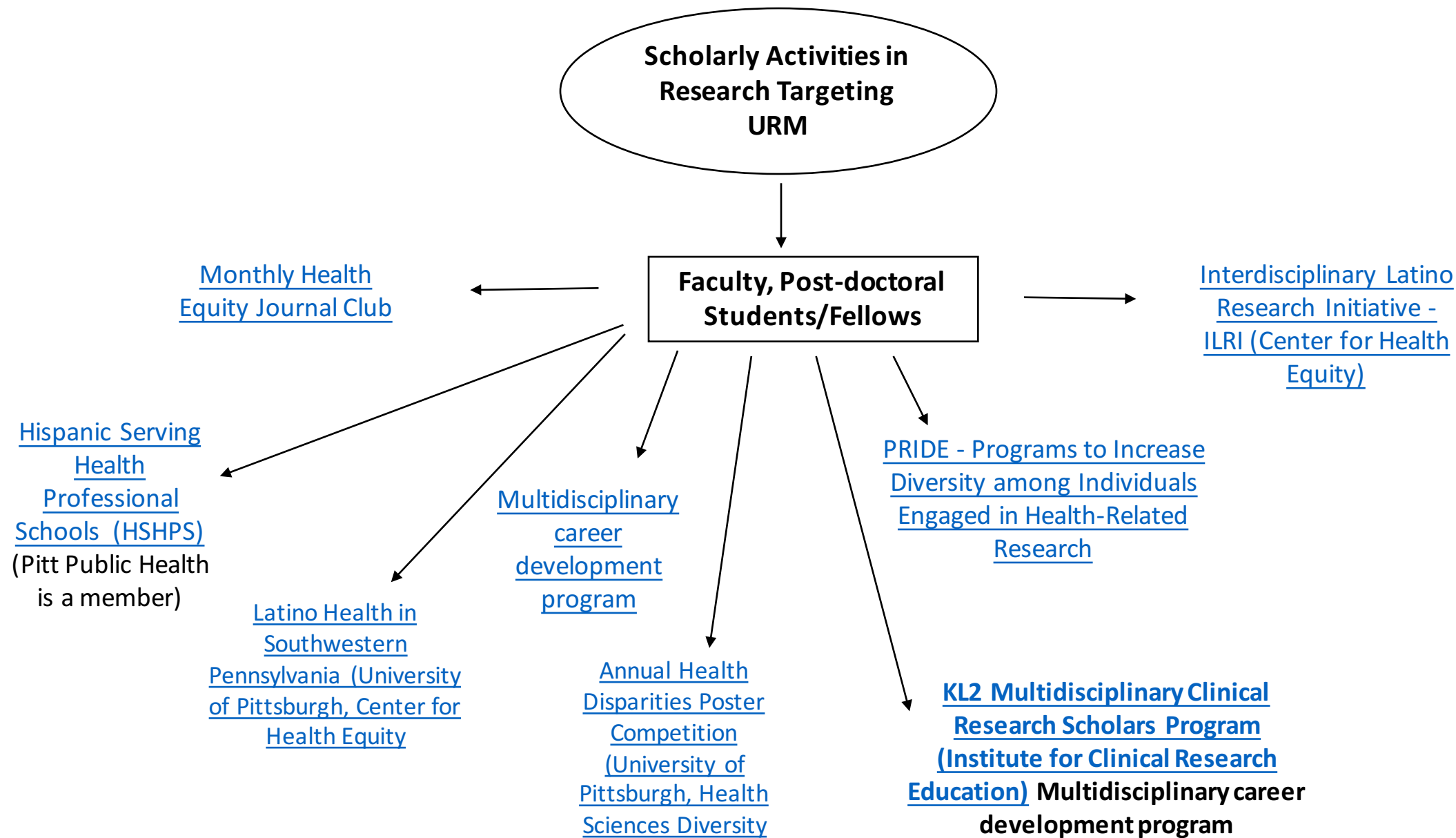
List of Resources to Enhance Faculty Diversity at Pitt Public Health



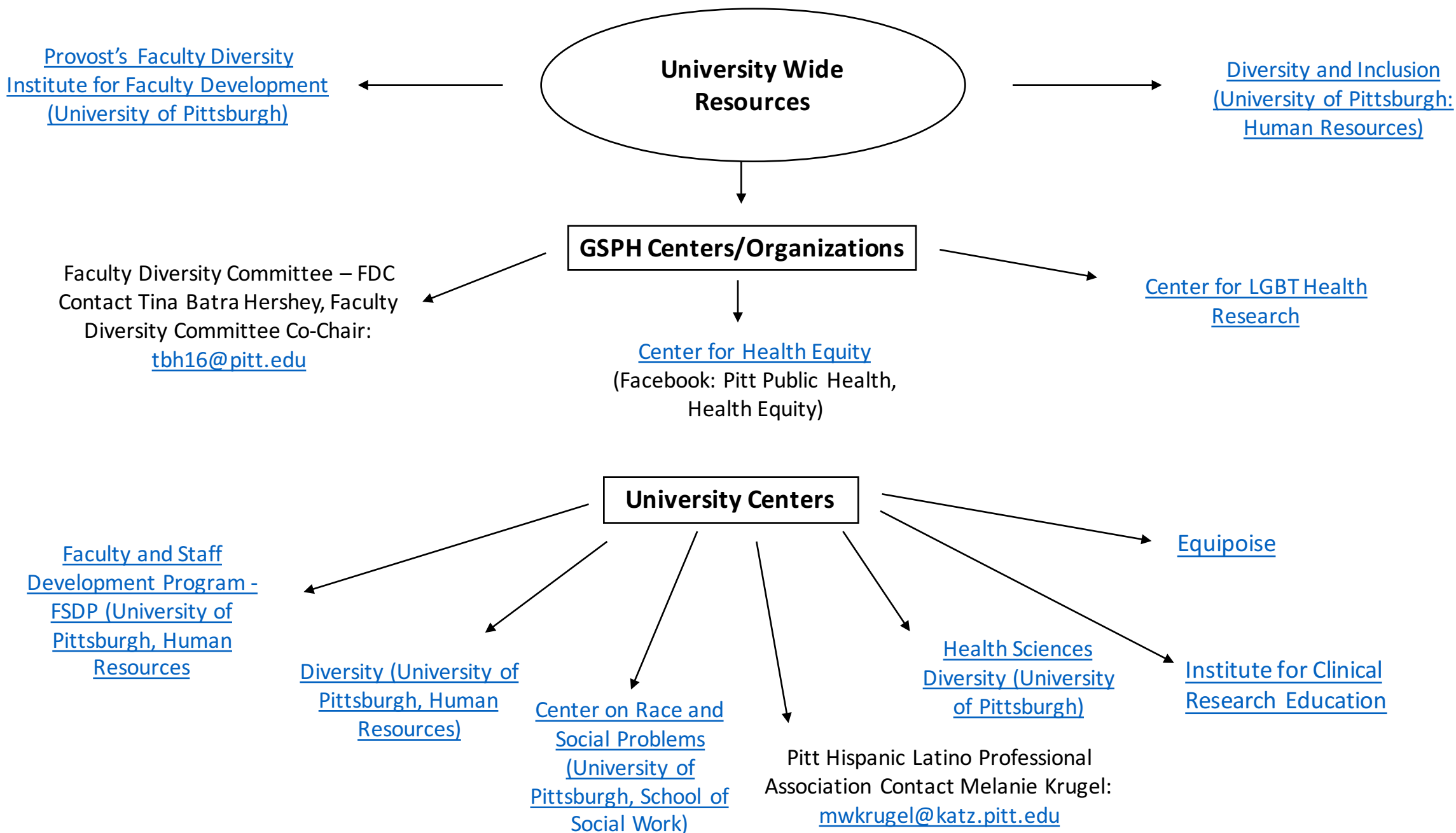
List of Resources to Enhance Faculty Diversity at Pitt Public Health



List of Resources to Enhance Faculty Diversity at Pitt Public Health



List of Resources to Enhance Faculty Diversity at Pitt Public Health



Local Organizations

List of Resources to Enhance Faculty Diversity at Pitt Public Health

International Organizations



National Organizations

American Public Health Association (APHA)

[The SoulPitt](#)
[Urban League of Greater Pittsburgh](#)
[Pennsylvania Diversity Council](#)
[Latin American Cultural Union](#)
Latino Round Table
latino-rt@lists.andrew.cmu.edu
(administrator: Rodolfo Vega, rmvega@cs.cmu.edu)

[Vibrant Pittsburgh](#)
[La Jornada Latina](#)
[The Gay & Lesbian Community Center of Pittsburgh \(GLCC\)](#)
[New Voices Pittsburgh](#)
[Office of Health Equity \(Pennsylvania Department of Health\)](#)
Latinet
latinnet@list.pitt.edu
(administrator: P. Documet, pdocumet@pitt.edu)

[The Office of Minority Health \(U.S. Department of Health and Human Services\)](#)

[oSTEM — Out in Science, Technology, Engineering and Mathematics](#)

[NOGLSTP — National Organization of Gay and Lesbian Scientists and Technical Professionals](#)

[National Diversity Council](#)

[National Medical Association](#)

[Hispanic-Serving Health Professions Schools - HSHPS](#)

[Ethnic Minority and Multicultural Health Special Interest Group - EMMH SIG \(Society of Behavioral Medicine\)](#)
Chair: Jamilia R. Sly: jamilia.sly@mssm.edu

[APHA - American Indian, Alaska Native & Native Hawaiian Caucus:](#)
Chair: Nancy Bill nancy.bill@ihs.gov

[Lesbian, Gay, Bisexual, and Transgender Caucus of Public Health Professionals](#)
Chair: Gabriel Galindo

[Latino Caucus for Public Health – LCPH \(American Public Health Association – APHA\):](#)
President, Jose Pietro Aparicio
DrJPAM@aol.com

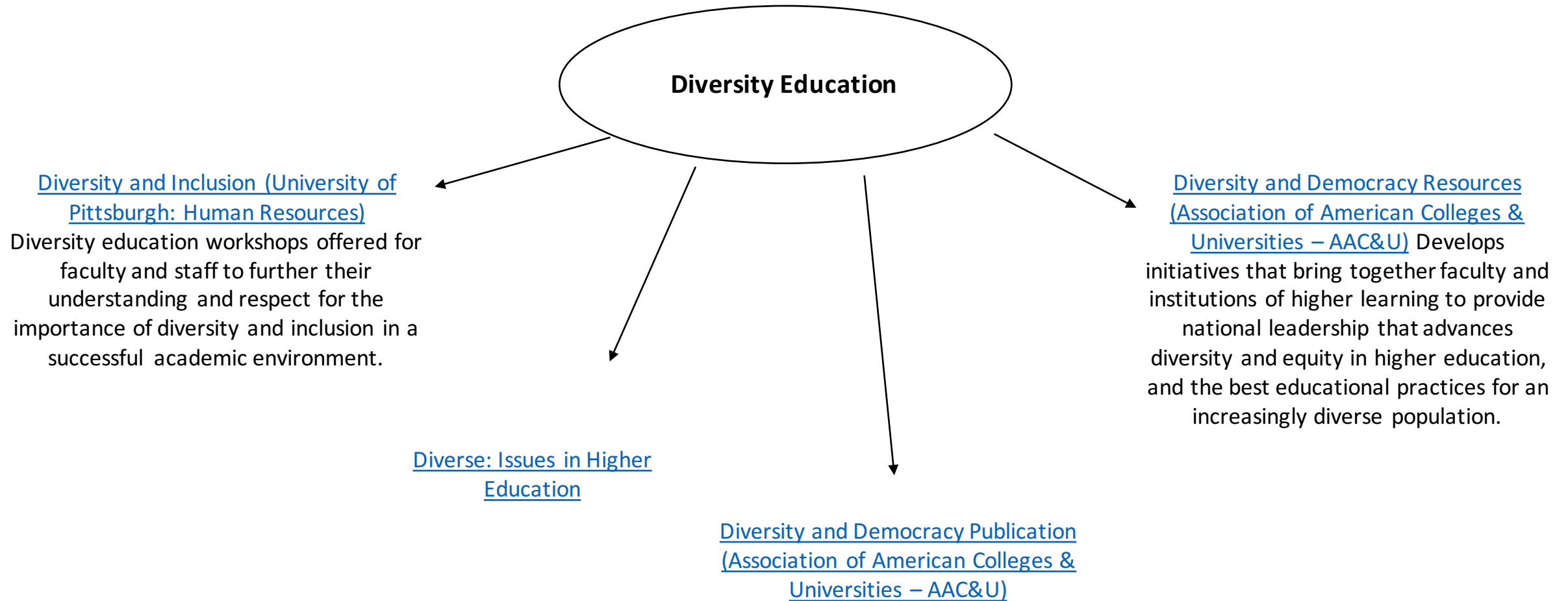
[Community Based Public Health Caucus \(American Public Health Association – APHA\):](#)
Chair: Mike Hernández
michael_a_hernandez@hotmail.com

[Black Caucus of Health Workers \(American Public Health Association – APHA\):](#)
President: [Albert W. Pless](#)
Cambridge Public Health Department
617-665-3830



[Brazilian Studies Association - BRASA](#)

List of Resources to Enhance Faculty Diversity at Pitt Public Health



List of Resources to Enhance Faculty Diversity at Pitt Public Health

Limited/No Resources